

TRIRIGA WPM Projects™



Achieve the right productivity and profitability for real estate projects by optimally balancing cost, schedule and resources

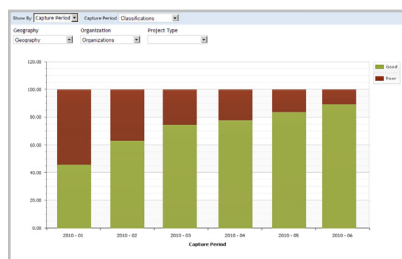


Today's Challenges

Organizations will typically spend \$20M annually on real estate projects for new construction, renovations, and facility moves. Statistics show that more than half of these real estate projects are over-budget and 84% finish behind schedule¹. These issues cost organizations millions of dollars of excess project expense, and in many industries, also result in lost revenue opportunities due to delayed openings of stores or other revenue-related projects.

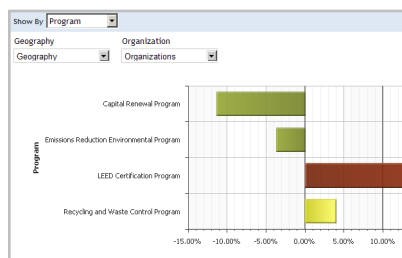
Project executives and managers own responsibility for the construction and renovation of buildings, from offices to new retail locations. Project executives and managers have to simultaneously balance and manage project cost, schedule, and internal and external resources (e.g. service providers and contractors) for large, complex and expensive projects. Effectively managing all aspects of project performance as well as internal and external resources requires a new approach. Project executives and managers today lack systems providing the insights to effectively target and measure project performance and proactively detect potential project delays, cost over-runs and idle or under-performing resources. Without these capabilities, organizations miss potential opportunities to substantially reduce project costs and/or accelerate revenue weeks.

Percent Projects Over Budget



Time trends validate progress against program and project goals

Project Schedule Variance



Pre-built metrics identify underperforming programs, projects, contractors and processes

Improve Project Performance with TRIRIGA Workplace Performance Management Projects

TRIRIGA WPM Projects, a performance management system for mid-size and large organizations, improves project performance by carefully managing costs, reducing schedule delays and maximizing resource utilization. TRIRIGA WPM Projects, one of five enterprise-class analytic applications which comprise the TRIRIGA WPM™ suite aligns project targets with broader business objectives, analyzes project performance vs. target, and identifies specific actions to address areas which are out-of-tolerance or under-performing.

With TRIRIGA WPM Projects, organizations can reduce project costs by 3-5%, or in the case of revenue-generating projects, companies can maximize revenue by accelerating project completion to increase revenue weeks. TRIRIGA WPM Projects applies improvements to objectives and processes instantaneously.

Improved Cost Management Increases Project Profitability

Project executives need to improve cost management of projects by better estimating and forecasting project costs, proactively managing project costs to budget, and detecting and identifying costly budget changes during the project. TRIRIGA WPM Projects:

- Analyzes historical project cost averages by region, project type and even down to detailed project tasks and costs, to improve forecasting accuracy
- Evaluates and analyzes project cost variances by project group/program, project type, geography and budget class to identify and proactively detect costly budget over-runs
- Automatically calculates budget changes and risks, and evaluates corresponding impacts so that action can be taken to avoid cost over-runs

¹IFMA 2007 Benchmark Report

Automated Schedule Management Increases Productivity and Reduces Project Cycle Time

In addition to improving cost management, project executives also need to improve time management of projects through better estimating and forecasting of time required, proactively managing project time to schedule, and detecting and identifying schedule impacts from project change orders. TRIRIGA WPM Projects:

- Measures task completion rate by project group, project type, and project team to better estimate and allocate resources and time to the project schedule
- Calculates project schedule variance to proactively monitor tasks and projects trending behind schedule, to identify opportunities to improve on-time completion rates
- Detects schedule risks and potential impacts by evaluating and tracking projects that are over schedule to reduce project delivery risk

Improved Resource Management Increases Utilization and Project Performance

Project executives need to allocate the right resources to each project to ensure effective resource utilization and efficient use of these resources. Effective resource management increases the utilization and productivity of project resources to improve both internal project team performance and external vendor performance. TRIRIGA WPM Projects:

- Measures project management team performance based on on-time completion rate, quality and cost to identify opportunities to improve productivity and reduce project costs
- Measures and monitors service delivery and service cost to detect under-performing or costly vendor services, to improve productivity and reduce vendor service costs

TRIRIGA WPM Applications Offer a Broad Array of Unique Customer Benefits

Like all of the TRIRIGA WPM applications, TRIRIGA WPM Projects:

- Operates from “inside” the TRIRIGA Integrated Workplace Management System (IWMS), enabling timely access to accurate information
- Includes pre-defined performance management metrics, reports, and role-based portals
- Shares the same toolset and advanced technology with TRIRIGA's IWMS operations management applications, enabling customers to rapidly configure and extend the application

Pre-Defined Role-Based Portals Cascade Objectives Down and Across the Organization

Like other TRIRIGA WPM applications, TRIRIGA WPM Projects includes role-based portals for each level of the Workplace Projects organization. The three personalized portals in TRIRIGA WPM Projects cascade and deploy performance management objectives down and across the organization.

TRIRIGA Workplace Performance Management Projects: Achieve Greater Performance!

Based on extensive industry experience working with market-leading companies, TRIRIGA WPM Projects offers a flexible, scalable, reliable enterprise-class software solution. TRIRIGA WPM Projects provides workplace managers and executives with the ability to target, measure and drive performance to minimize capital expenses and accelerate cycle times for real estate projects.

TRIRIGA: Uniquely Positioned To Deliver Customer Success

The TRIRIGA WPM suite of applications extends the unique capabilities of TRIRIGA IWMS. Recognized by leading industry analysts as the best-in-class solution, TRIRIGA provides the industry's most extensive functionality in a fully integrated IWMS solution. With TRIRIGA IWMS, organizations can significantly improve financial performance and return on workplace assets. TRIRIGA's extensible technology provides customers with unmatched business agility to align and rapidly re-align objectives and the organization's processes to maximize financial performance. With an outstanding network of consultants, partners, industry experts, and market-leading customers, TRIRIGA delivers exceptional service and proven best practices. A well-established organization, TRIRIGA® delivers customer success!

To find out more about how TRIRIGA Workplace Performance Management Projects improves the bottom-line, contact an expert at 702 932 4444.

- 24 Performance Metrics
- 14 Performance Metric dimensions
- 19 Performance Reports
- Personalized Filters and Drill-paths for Analysis
- Financial Staging Tables for Financial Cost Data
- Financial Data Off-line Form
- Performance Metric Targets
- Performance Thresholds for Industry Benchmarking
- Time Trend Analysis
- IWMS Star Schema Analytics Data Model

Pre-Defined Performance Portals:

- Project Executive
- Project Manager
- Project Team Member

Metrics:

TRIRIGA WPM Projects includes 24 performance metrics to evaluate and analyze workplace project operations across multiple dimensions:

- On-Target Service Costs (%)
- On-Target Service Costs (%) (Score)
- On-Time Service Responsiveness (%)
- On-Time Service Responsiveness (%) (Score)
- Move Cost (USD / RSF)
- Move Cost (USD / RSF) (Score)
- Move Cost (USD / Person)
- Move Cost (USD / Person) (Score)
- Change Orders to Contract (Score)
- Contract On-Time Completion Rate (Score)
- Percent Project Over Budget (%) (Score)
- Current Budget to Forecast
- Original Budget to Forecast
- My Project Budget
- New Construction Cost / Area (USD / GSF)
- New Construction Cost / Area (USD / USF)
- Renovation Cost / Area (USD / GSF)
- Renovation Cost / Area (USD / USF)
- Change Orders to Budget
- Percent Project Over Schedule (%) (Score)
- Project Schedule Variance
- Project On-Time Completion Rate (Score)
- Percent RFI Overdue (%)
- RFI Response Time

Metric Dimensions:

TRIRIGA WPM Projects metrics can be evaluated across 14 dimensions:

- Project
- Project Group
- Geography
- Location
- Project Classification
- Capture Period
- Organization
- Project Type
- Budget Class
- Project Manager
- Client, Vendor
- Contract
- Assigned Resource
- Request Class

Reports:

TRIRIGA WPM Projects includes 19 pre-built reports:

- My Project Groups
- My Projects by Project Lead
- Overall Project Performance by Region
- Project Schedule Performance
- Overall Project Issues
- Projects Completed, Ongoing and Planned
- My Active Projects
- My Tasks
- Project Status Report
- Project Cost Summary - All Projects
- Project Cost Summary - Project Level
- Contract Execution Report
- Contract Execution
- Vendor Work History
- RFI Summary
- Change Order Status
- Potential Change Orders
- Tasks Due
- Commitments vs. Invoiced



The Global IWMS Leader

6720 Via Austi Parkway, Suite 500, Las Vegas NV 89119 | 702-932-4444 | 888-TRIRIGA | www.tririga.com | © 2010 TRIRIGA INC.